

Adobe InCopy CS3 with WoodWing Smart Connection Enterprise 5 INSTALLATION and CONFIGURATION

Step 1: Order InCopy CS3 install media (DVD-disc) from Smartium or download the installer package from <http://www.smartium.fi/files/sce5win.zip>

InCopy CS3 system requirements from Adobe

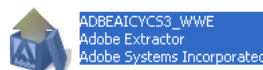
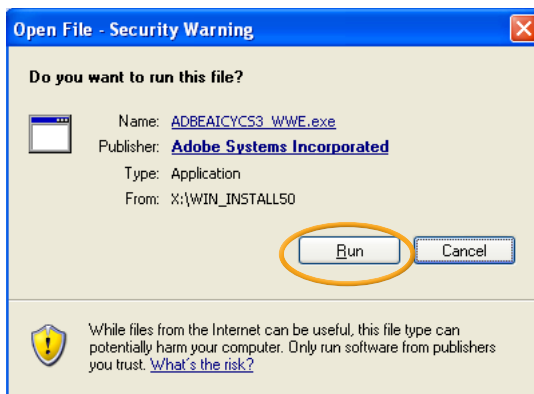
WINDOWS

Intel® Pentium® 4, Intel Centrino®, or Intel Xeon® processor
Microsoft® Windows® XP with Service Pack 2 or Windows Vista™ Home Premium, Business, Ultimate, or Enterprise
512MB of RAM; 1GB recommended
316MB of available hard-disk space
1,024x768 monitor resolution with 16-bit video card (24-bit screen display recommended)
DVD-ROM drive

MACINTOSH

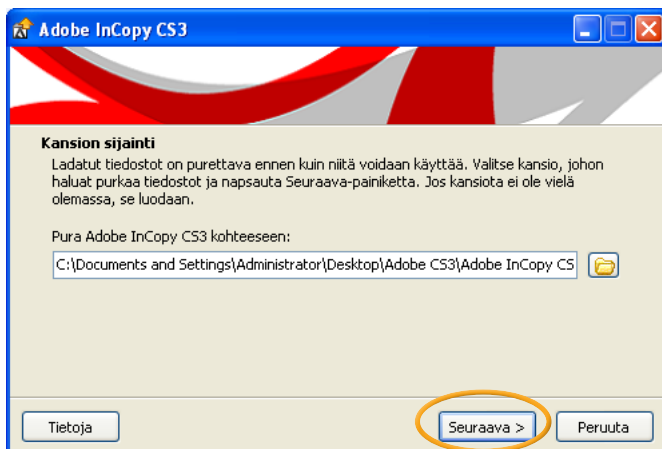
PowerPC® G4 or Intel processor
Mac OS X v10.4.8-10.5 (Leopard)
512MB of RAM
350MB of available hard-disk space
1,024x768 monitor resolution with 16-bit video card (24-bit screen display recommended)
DVD-ROM drive

<http://www.adobe.com/products/incopy/systemreqs/>



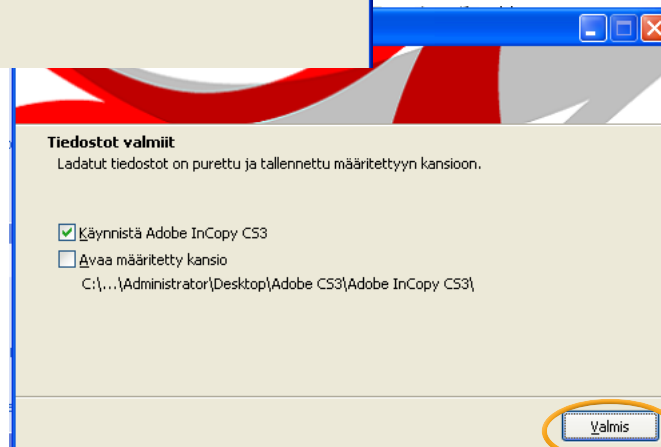
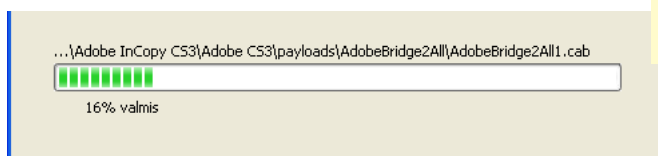
Step 2a: Open the downloaded installer package. It will first copy the install components to a folder on the Desktop, then automatically start the installer process.

Step 2b: If you have the installation media (DVD), open folder **Adobe CS3** from the disc and open **Setup.exe**.



NOTE: You will need **Local Admin** privileges to install InCopy.

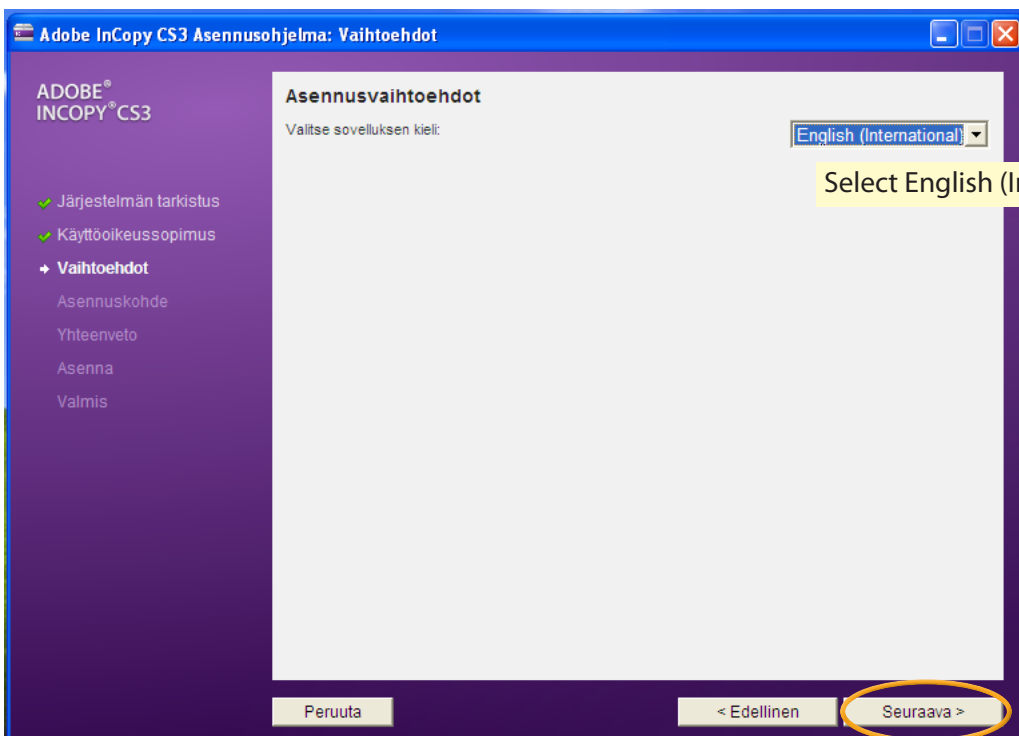
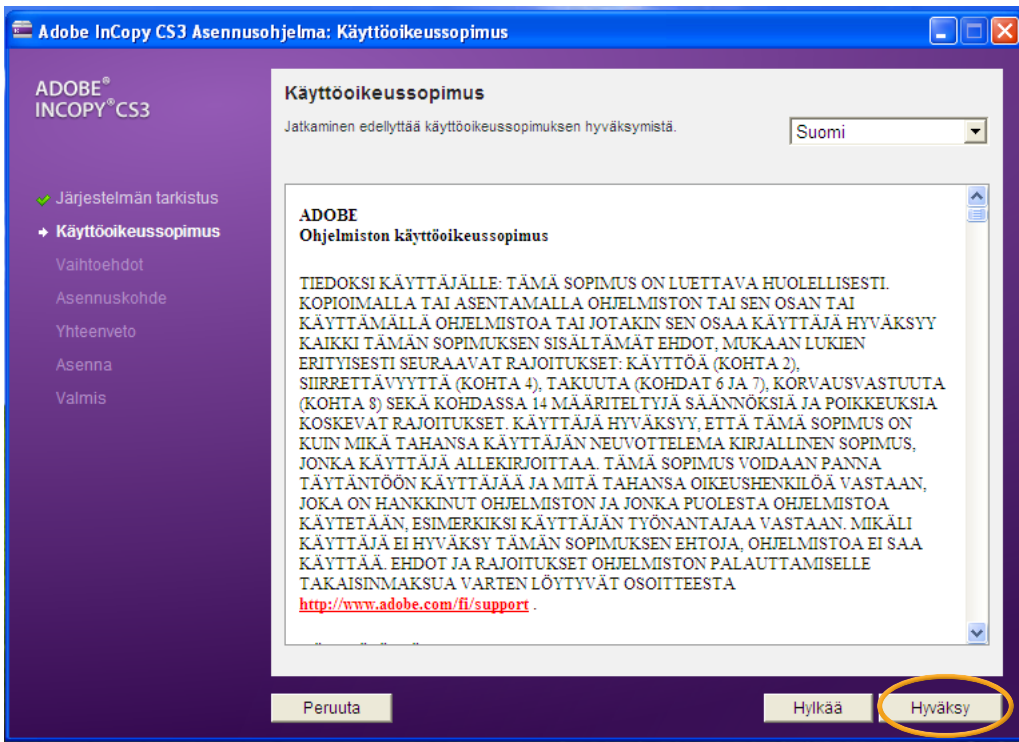
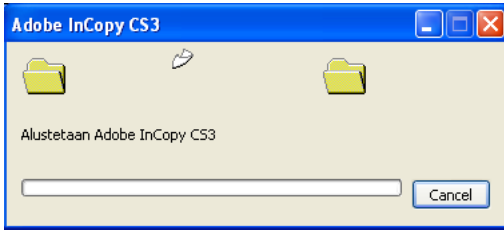
Extraction will take about 2–3 minutes.

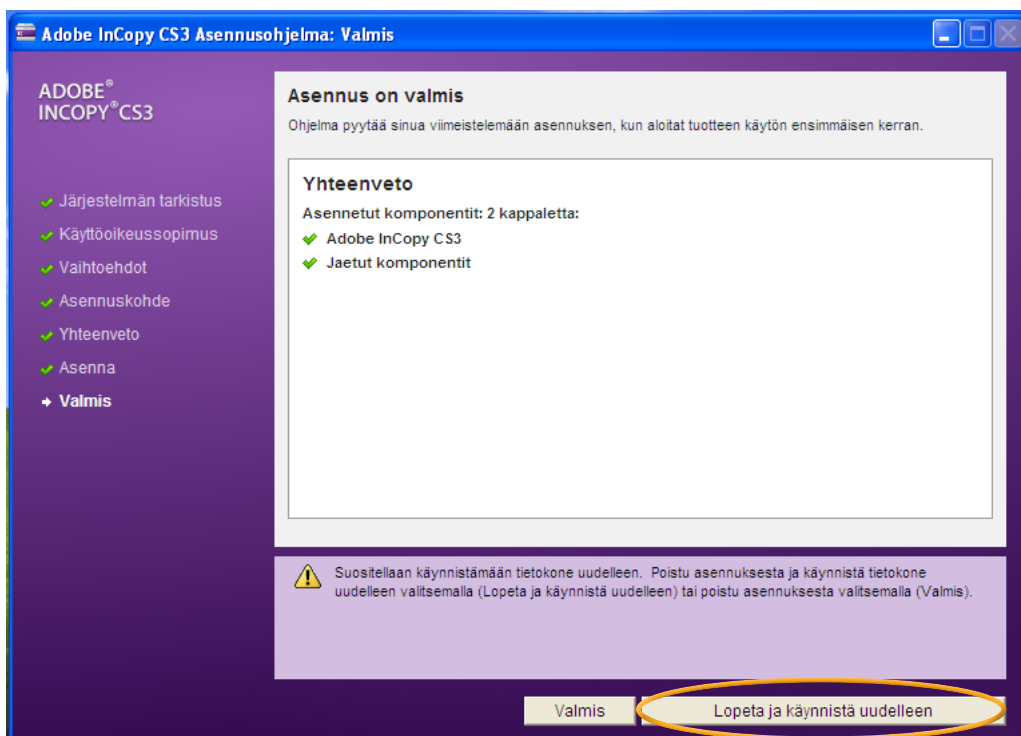
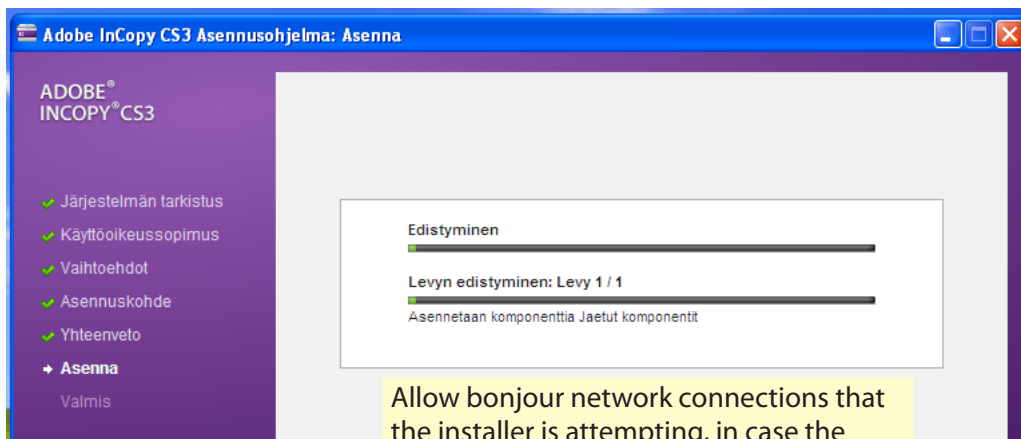
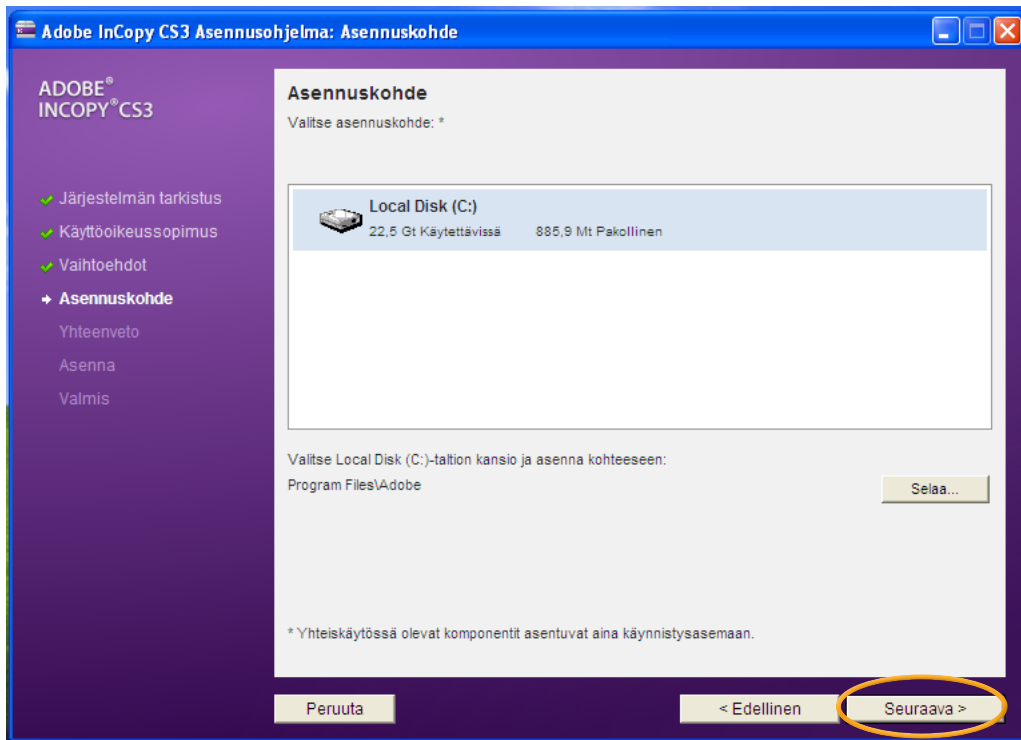


Document version info
InCopy 5.0.4 (October 2008)
Smart Connection 5.0.10 (December 2008)
Document: January 7, 2009

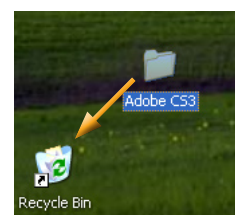
smartium Oy
Hämeentie 153 B
FI-00560 Helsinki
info@smartium.fi
+358 10 6665140
vat# FI19841133
www.smartium.fi

Step 3: Start the installation process. This step takes 10–20 minutes.



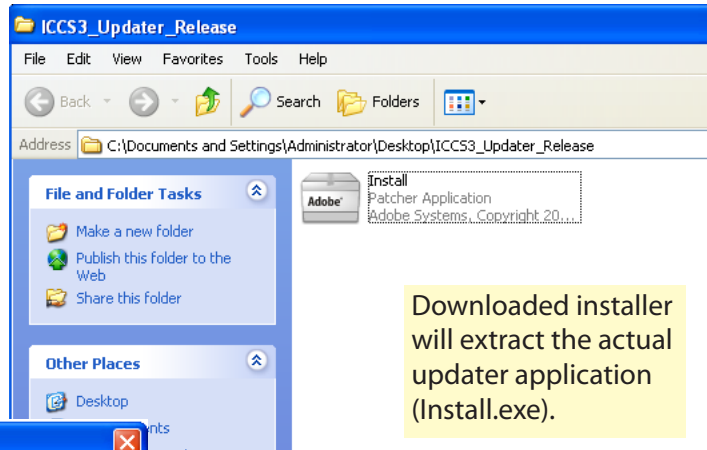


After installation has completed, you can delete the downloaded installation package and folder.

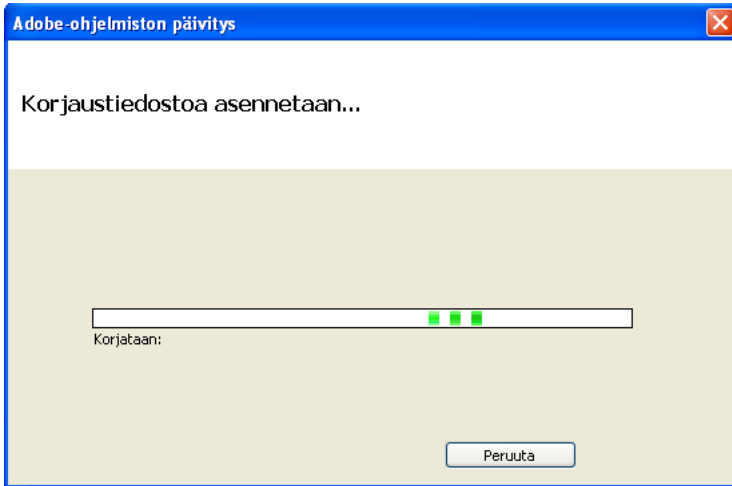


Step 4: Download and install InCopy updates. Updater is also on the install DVD.

<http://www.adobe.com/support/downloads/detail.jsp?ftplD=4032>

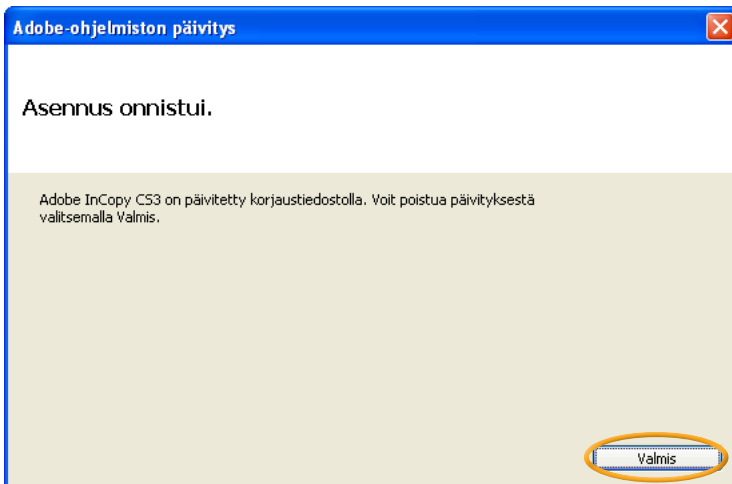


Update process will take 1–2 minutes.



Alternatively, you can open the installed InCopy application, and let **Adobe Updater** automatically update all your Adobe software. This might take 5-15 minutes depending on your internet connection.

Adobe updater starts automatically. If you want to run it manually, select **Updates** from InCopy **Help** menu.



Step 5: Download and install Smart Connection Enterprise connectivity plugins.

http://www.smartium.fi/files/sce5.exe

File Download - Security Warning
Do you want to run or save this file?
Name: SCEEnterprise_v5.0.1.44.exe
Type: Application, 18,0MB
From: www.smartium.fi
Run Save Cancel

Internet Explorer - Security Warning
The publisher could not be verified. Are you sure you want to run this software?
Name: SCEEnterprise_v5.0.1.44.exe
Publisher: Unknown Publisher
Run Don't Run

Smart Connection Enterprise v5.0 Setup
Welcome to the InstallShield Wizard for Smart Connection Enterprise
The InstallShield® Wizard will install Smart Connection Enterprise on your computer. To continue, click Next.
< Back Next > Cancel

Smart Connection Enterprise v5.0 Setup
License Agreement
Please read the following license agreement carefully.
Single User License Agreement for WoodWing Smart Connection Enterprise 5.0
NOTE, THIS IS A CONTRACT:
Please read it carefully because by indicating your acceptance below, you accept to agree to all terms and conditions of this agreement. If you do not agree with the terms and conditions, you should decline and will
 I accept the terms of the license agreement
 I do not accept the terms of the license agreement
Print
< Back Next > Cancel

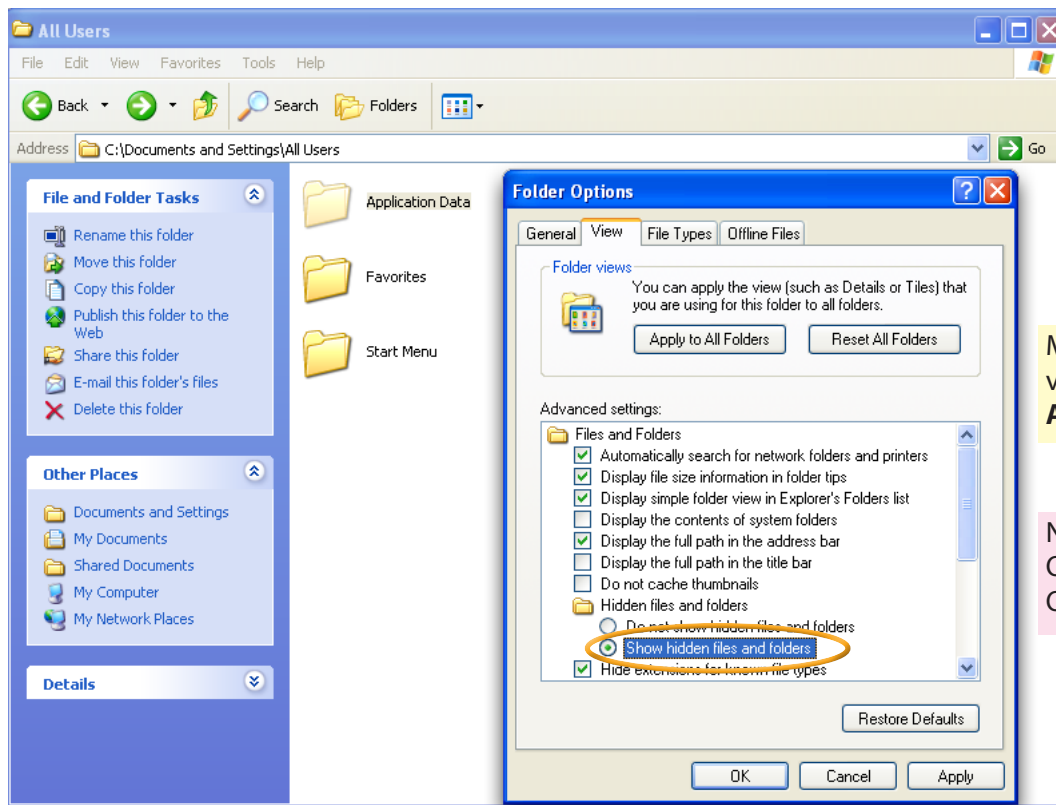
Smart Connection Enterprise v5.0 Setup
Setup Type
Select the setup type that best suits your needs.
Click the type of setup you prefer.
Smart Connection Enterprise 5.0 for InCopy CS3
Smart Connection Enterprise 5.0 for InDesign CS3
Description: Installs the Smart Connection Enterprise plug-ins for Adobe InCopy CS3.
< Back Next > Cancel

Smart Connection Enterprise v5.0 Setup
Choose Destination Location
Select folder where setup will install files.
Setup will install Smart Connection Enterprise for InCopy CS3 in the following folder:
To install to this folder, click Next.
To install to a different folder, click Browse and select another folder.
Destination Folder: C:\Program Files\Adobe\Adobe InCopy CS3\
Browse...
< Back Next > Cancel

Smart Connection Enterprise v5.0 Setup
Select Features
Select the features setup will install.
Select the features you want to install, and deselect the features you do not want to install.
Smart Connection Enterprise Plug-ins 0 K
Documentation 0 K
InCopy Diverset Plug-in 0 K
Description: The Smart Connection Enterprise plug-ins. Without these plug-ins the product will not work.
Change...
Space Required on C: 0 K
Space Available on C: 24695612 K
< Back Next > Cancel

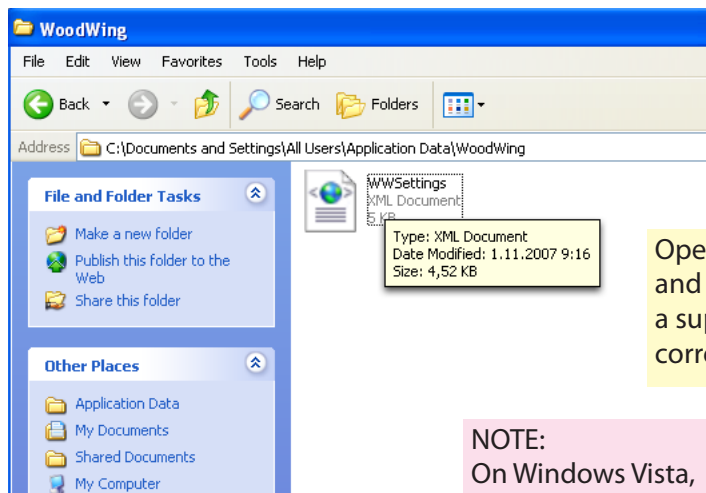
Smart Connection Enterprise v5.0 Setup
Setup has finished installing Smart Connection Enterprise on your computer. You can now start Adobe InDesign CS3 or InCopy CS3 to work with Smart Connection Enterprise.
OK

Step 6: Install configuration files.



Make hidden folders visible to access folder **Application Data**

NOTE:
On Windows Vista, Folder Options is a Control Panel



Open **WWSettings.xml** with Notepad and replace its content (copy/paste) from a supplied, preconfigured version or add correct server URL to the the sample file .

NOTE:
On Windows Vista, **WWSettings.xml** file is located in folder c:\ProgramData\WoodWing\

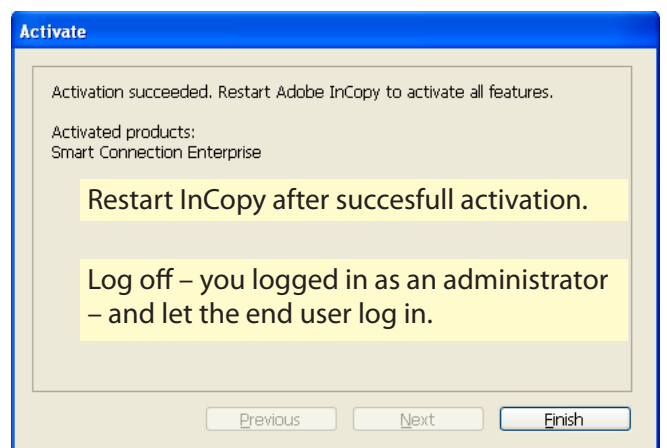
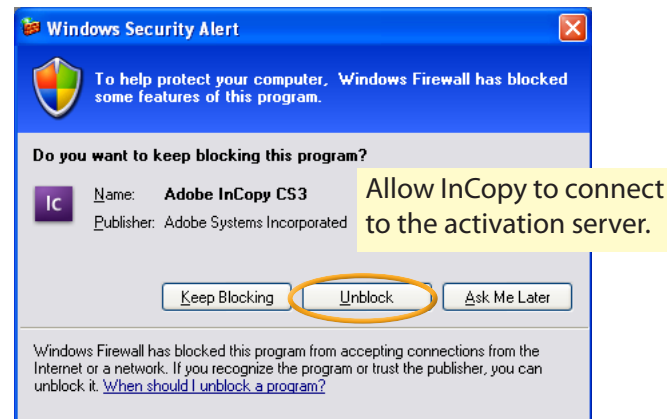
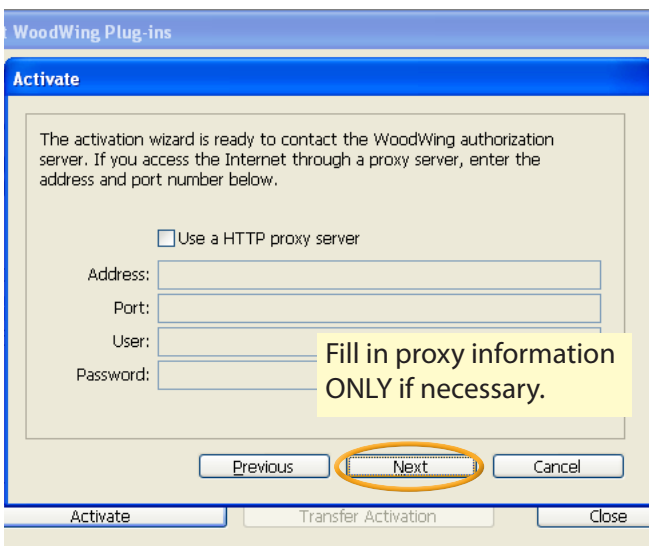
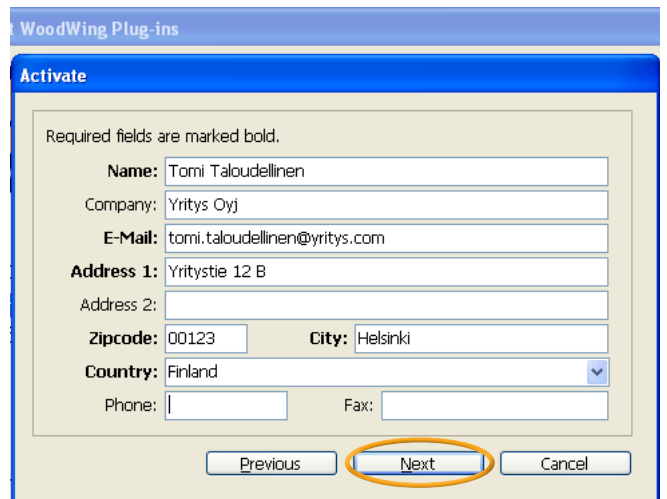
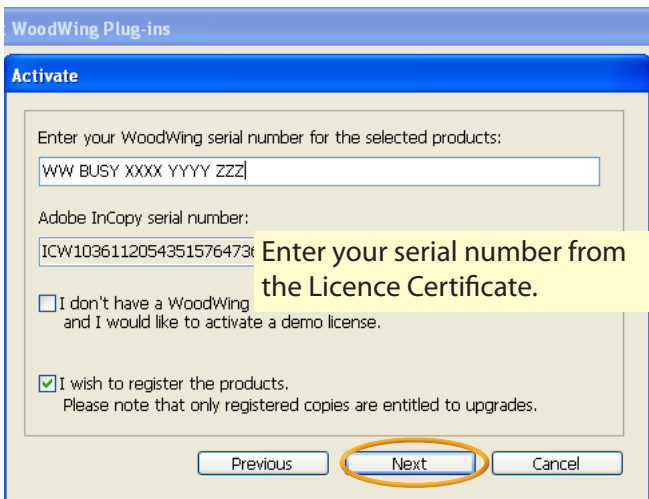
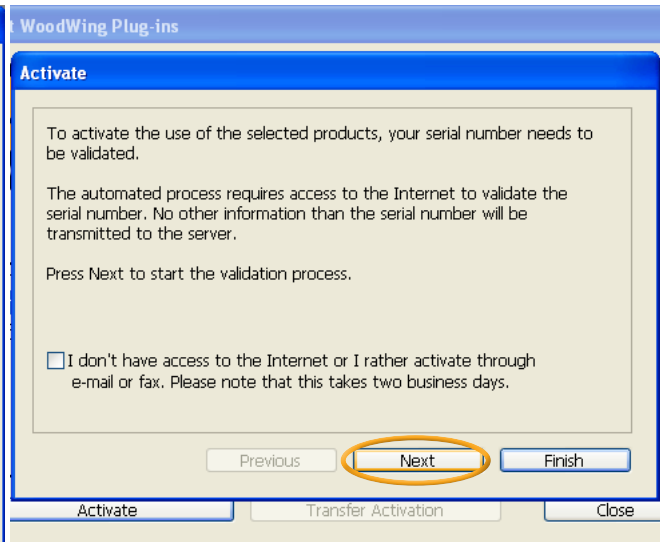
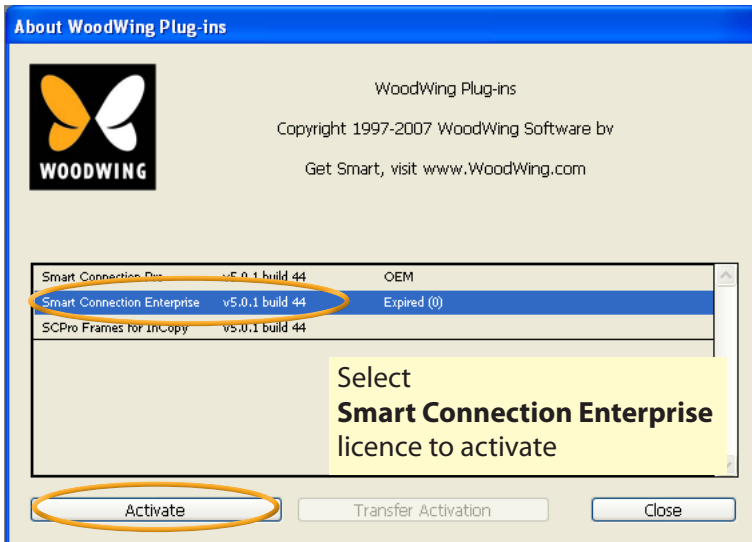
Instructions for how to edit WWSettings.xml file are embedded inside the document. There is basically 1 line to modify – change the marked parts to match the server you need to connect to:

```
<SCEnt:ServerInfo name="_servername_" url="https://_server_url_/SCEnterprise/index.php"/>
example:
<SCEnt:ServerInfo name="Smartium" url="https://server.smartium.fi/SCEnterprise/index.php"/>
```

If – and only if – you need to connect via a proxy server, modify the empty SCEnt:Proxy -statement. **example:** <SCEnt:Proxy address="pxy.intra.corp.com:8080" user="" password="" />

NOTE: Make sure that the user account has at least READ access to WWSettings.xml file after your edits.

Step 7: Plugin activation: launch InCopy once **as administrator** for the activation run. Enter InCopy serial, **do not register**. Activation dialog is displayed automatically. Restart InCopy after activation with the user account.



Possible error messages ...

Invalid Serial Number – application was not started with administrative rights and cannot write registration info; or a typo in the serial

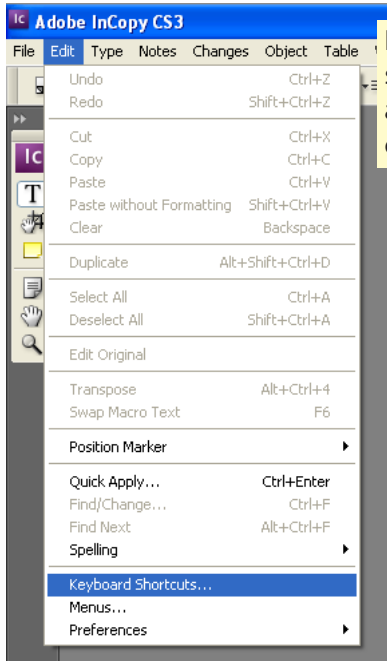
Unknown Product – serial number is for a different product

Maximum seats reached – all licenced seats have been activated. Are there unused seats that have not been transferred?

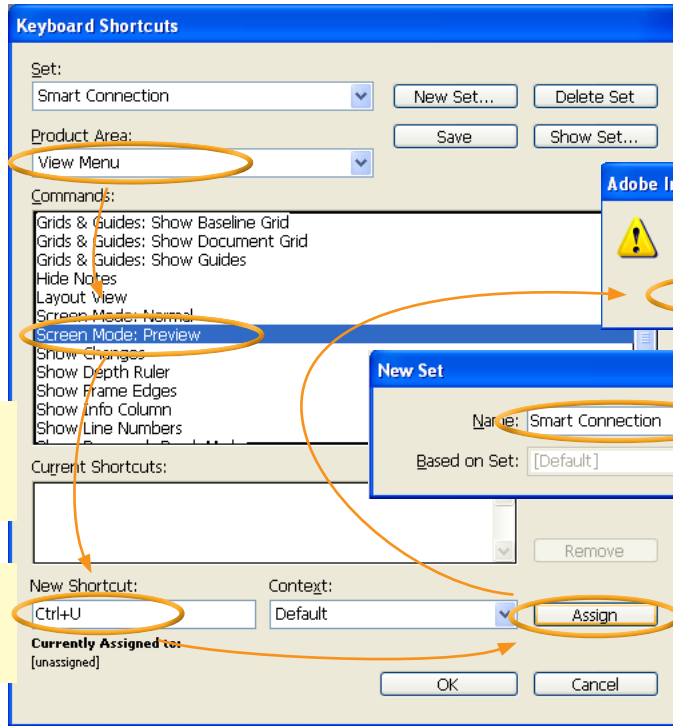
Activation Failed (4:0) – communication error to the activation server. Retry with proxy information, check firewall settings or ask WoodWing Support for a manual activation. Instructions: <http://kb.woodwing.net/article.php?id=009>

Step 8a: Drag InCopy CS3 shortcut to the desktop, launch InCopy.

Step 8b: Configure keyboard shortcuts for InCopy.

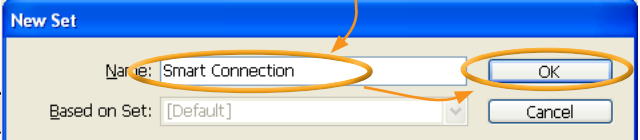
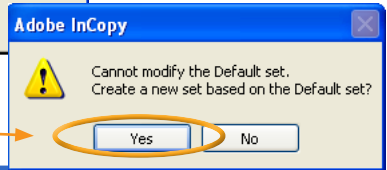


Keyboard shortcuts can save time, if the user actually uses them. They can be easily configured.

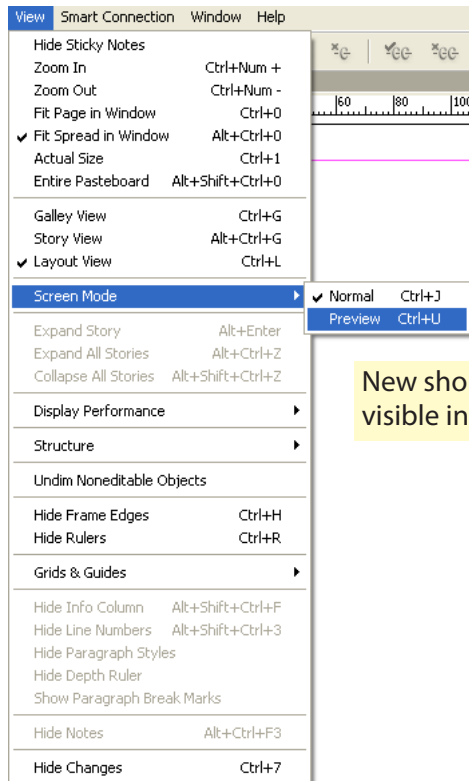


Add **Ctrl-U** for Screen Mode: Preview

Add **Ctrl-0** [zero] for Fit Page in Window

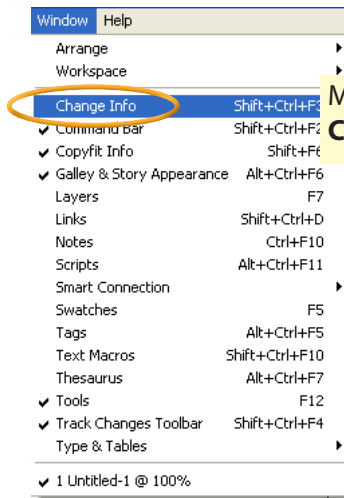
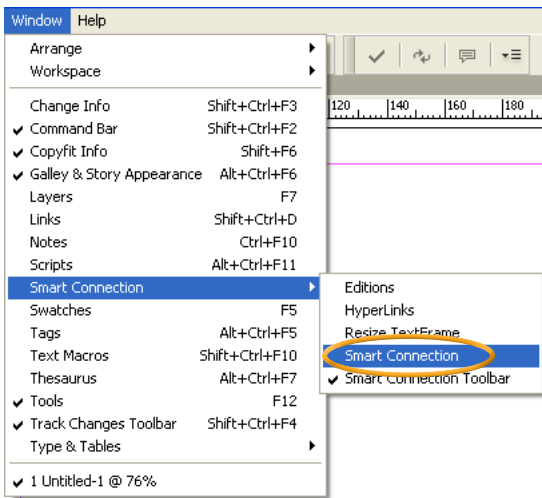


A new "set" of shortcuts needs to be created, since the default set cannot be modified.

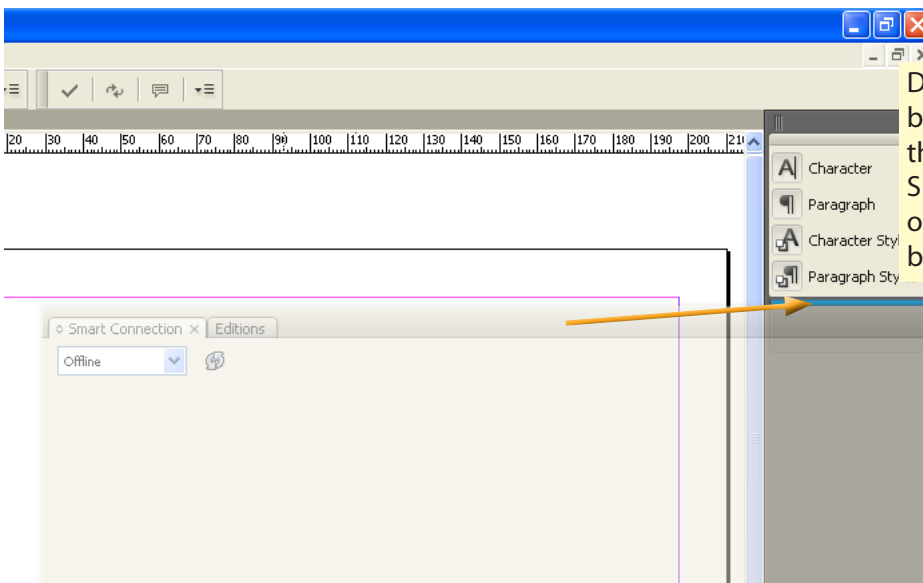


New shortcuts are visible in the menus.

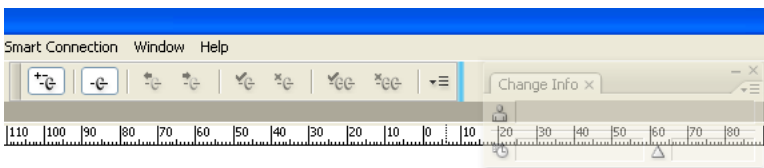
Step 8c: Configure InCopy CS3 Workspace.



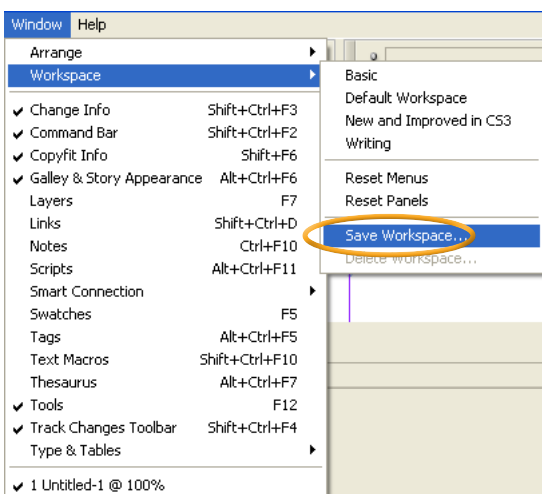
Make **Smart Connection** and **Change Info** panels visible.



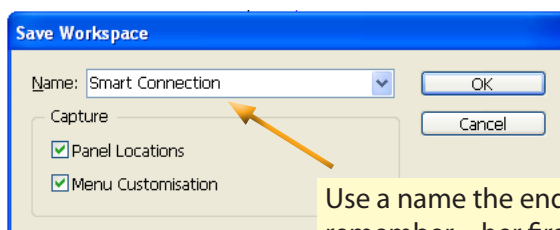
Drag **Smart Connection** panel below the panel dock (notice the blue line). Smart Connection panel will open and collapse from the butterfly icon.



Drag **Change Info** panel to the toolbar. (On a very small display (1024x768) same icons will not fit.)

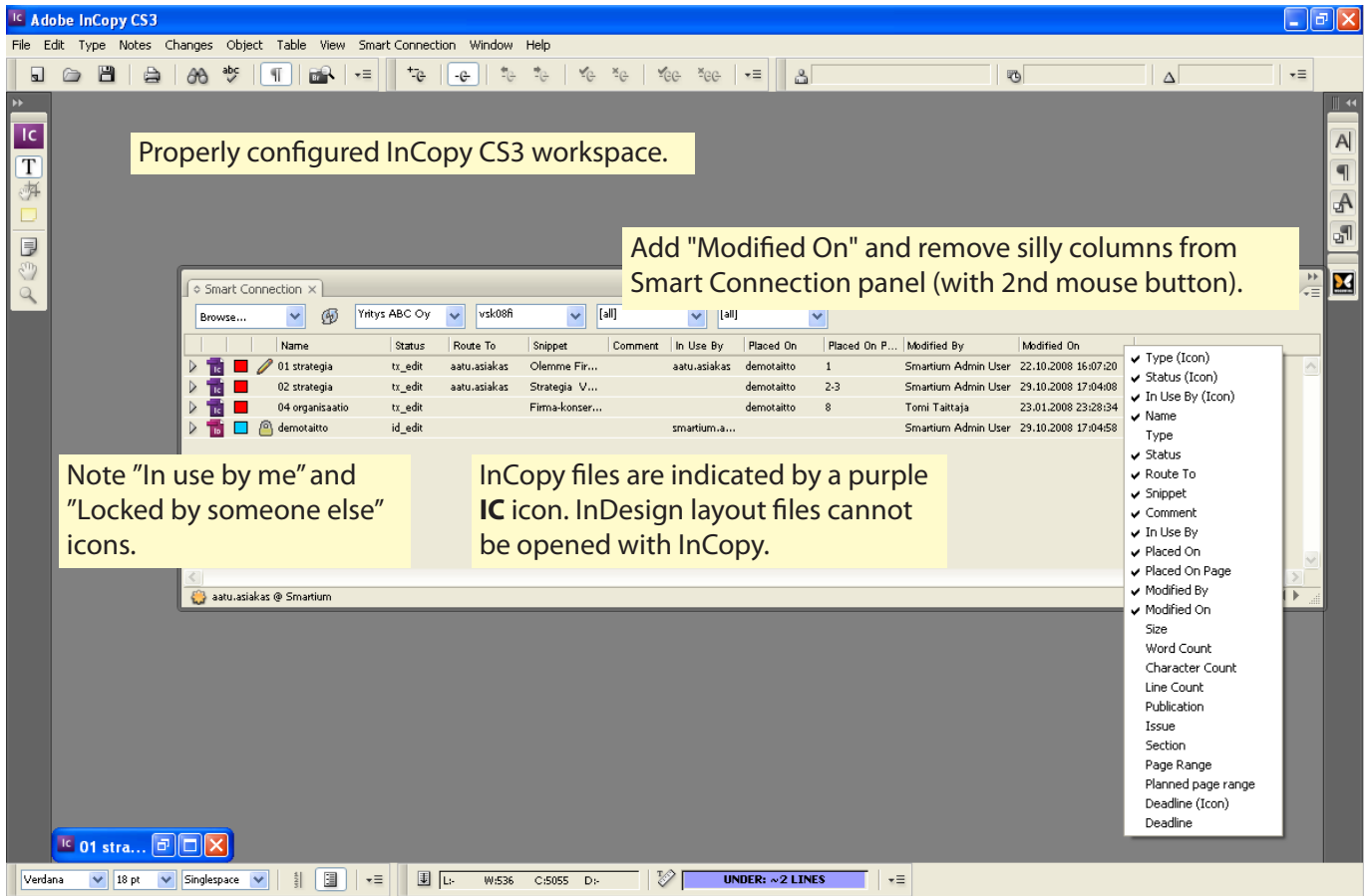


Save your configured menus and panel locations as a **Workspace**. It can be accessed any time from menu **Window > Workspace**.

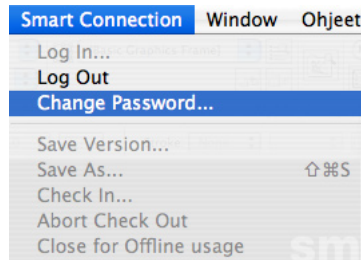


Use a name the end user will remember – her first name?

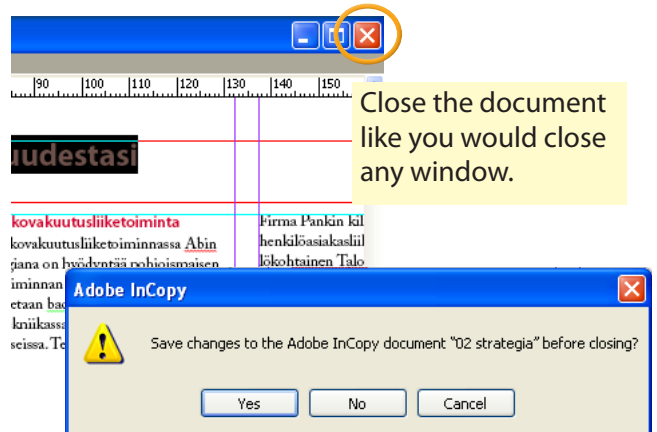
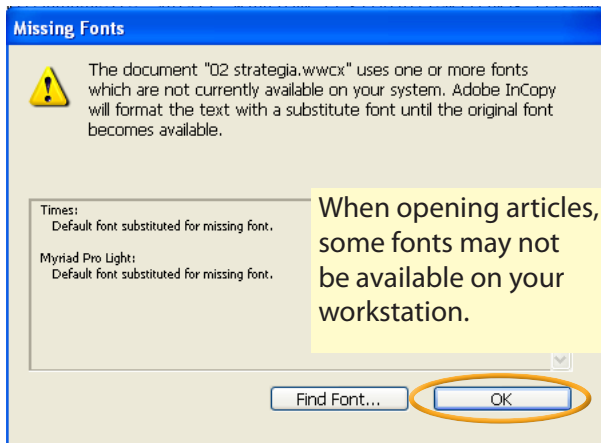
Step 9a: Configure Smart Connection panel with the end user (logged in as the end user).



Step 9b: Ask user the change his/her password



Step 9c: Test opening, changing and closing a document.



NOTE:
It is recommended to install required fonts for text editing, since missing fonts effect preview, printing and copy-fitting.

Closing a document releases its lock, and it can be opened by others.